

UNIT, DIRECT SUPPORT, AND GENERAL SUPPORT MAINTENANCE
REPAIR PARTS AND SPECIAL TOOLS LIST
TRUCK, 5-TON, 6X6, M809 SERIES TRUCKS (DIESEL)

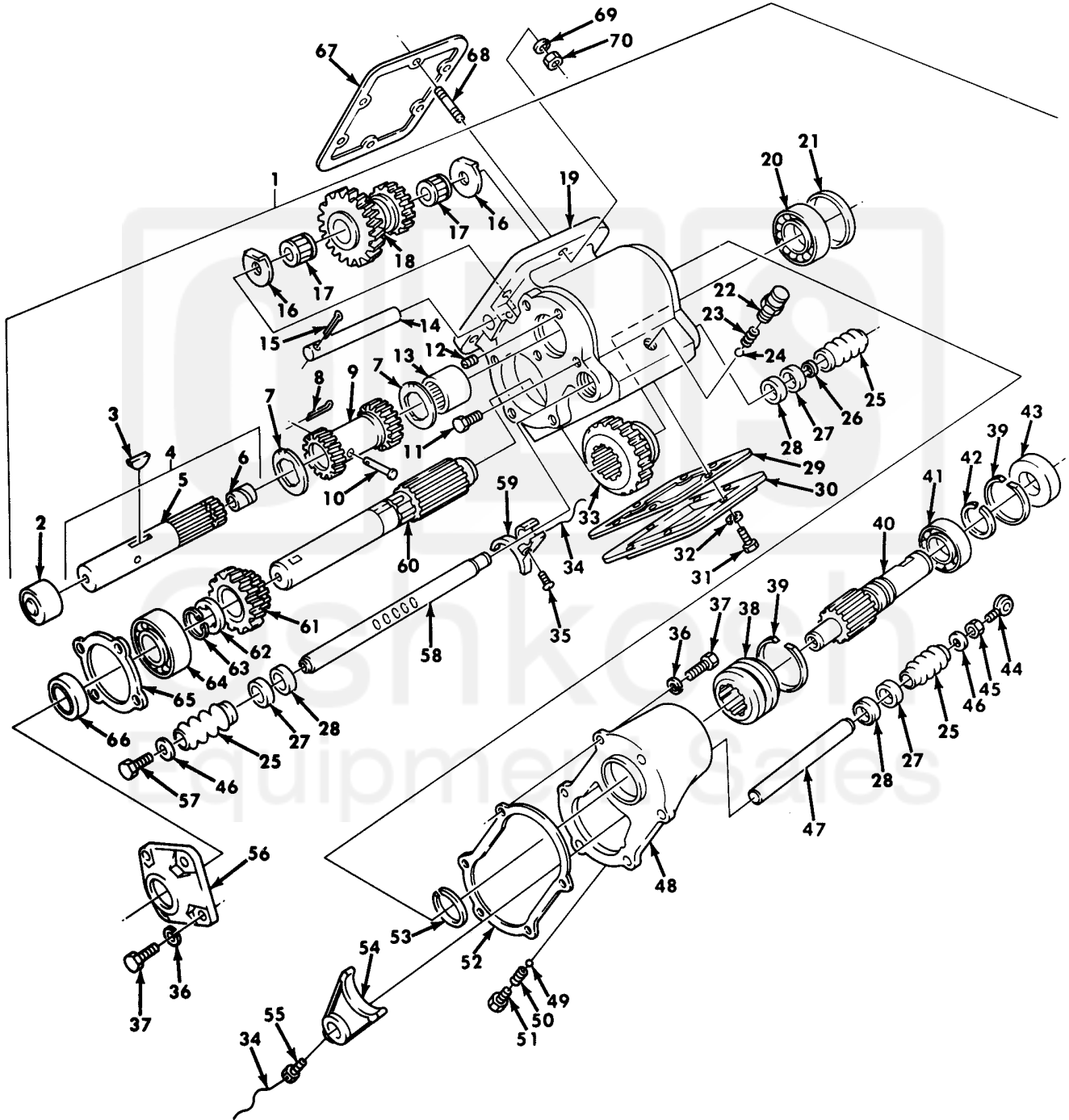


Figure 418. Transmission Power Takeoff Assembly and Mounting Hardware.

| (1) ITEM NO | (2) SMR CODE | (3) NSN | (4) CAGEC | (5) PART NUMBER | (6) DESCRIPTION AND USABLE ON CODE (UOC) | (7) QTY |
|--|--------------------|------------------|--------------|-----------------------|--|------------|
| GROUP 2004 POWER TAKEOFF ASSEMBLY | | | | | | |
| FIG. 418 TRANSMISSION POWER TAKEOFF ASSEMBLY AND MOUNTING HARDWARE | | | | | | |
| 1 | PAFFF | 2520-00-740-9589 | 19207 | 7409589 | POWER TAKEOFF, TRANS..... UOC: 620, 627, 633 | 1 |
| 2 | PAFZZ | 3110-00-183-6723 | 24617 | 713421 | . BEARING..... UOC: 620, 627, 633 | 1 |
| 3 | PAFZZ | 5315-00-058-8581 | 96906 | MS35756-109 | . KEY, WOODRUFF..... UOC: 620, 627, 633 | 1 |
| 4 | PAFZZ | 2520-00-740-9594 | 19207 | 7409594 | . SHAFT REVERSE GEAR..... UOC: 620, 627, 633 | 1 |
| 5 | XAFZZ | | 19207 | 10900574 | . . SHAFT..... UOC: 620, 627, 633 | 1 |
| 6 | PAFZZ | 3120-00-737-3115 | 19207 | 7373115 | . . BEARING, SLEEVE..... UOC: 620, 627, 633 | 1 |
| 7 | PAFZZ | 5310-00-706-1281 | 19207 | 7061281 | . WASHER, THRUST..... UOC: 620, 627, 633 | 2 |
| 8 | PAFZZ | 5315-00-839-2326 | 96906 | MS24665-281 | . PIN, COTTER..... UOC: 620, 627, 633 | 1 |
| 9 | PAFZZ | 2520-00-740-9587 | 19207 | 7409587 | . GEAR REVERSE SHAFT..... UOC: 620, 627, 633 | 1 |
| 10 | PAFZZ | 5315-01-208-5492 | 19207 | 8728251 | . PIN, STRAIGHT, HEADED..... UOC: 620, 627, 633 | 1 |
| 11 | PAFZZ | 5306-00-226-4822 | 80204 | B1821BH031C050N | . BOLT, MACHINE..... UOC: 620, 627, 633 | 2 |
| 12 | PAFZZ | 4730-00-018-9566 | 81348 | WW-P-471ACABCA | . PLUG, PIPE..... UOC: 620, 627, 633 | 1 |
| 13 | PAFZZ | 3110-00-183-6723 | 96906 | MS17131-35 | . BEARING, ROLLER, NEED..... UOC: 620, 627, 633 | 1 |
| 14 | PAFZZ | 3040-00-706-1266 | 95019 | 9P21 | . SHAFT, SHOULDERED..... UOC: 620, 627, 633 | 1 |
| 15 | PAFZZ | 5315-00-013-7258 | 96906 | MS24665-497 | . PIN, COTTER..... UOC: 620, 627, 633 | 1 |
| 16 | PAFZZ | 5310-00-753-8656 | 19207 | 7538656 | . WASHER, KEY..... UOC: 620, 627, 633 | 2 |
| 17 | PAFZZ | 3110-00-227-3074 | 19207 | 7538658 | . BEARING, ROLLER, JOUR..... UOC: 620, 627, 633 | 2 |
| 18 | PAFZZ | 3020-00-740-9586 | 19207 | 7409586 | . GEAR CLUSTER..... UOC: 620, 627, 633 | 1 |
| 19 | PAFZZ | 2520-00-706-1160 | 19207 | 7061160 | . CASE NAME PLATE..... UOC: 620, 627, 633 | 1 |
| 20 | PAFZZ | 3110-00-100-3119 | 60038 | 700080 | . CONE AND ROLLERS, TA..... UOC: 620, 627, 633 | 1 |
| 21 | PAFZZ | 2520-00-706-1265 | 19207 | 7061265 | . SPACER POWER TAKE O..... UOC: 620, 627, 633 | 1 |
| 22 | PAFZZ | 2520-00-104-4603 | 19207 | 5226140 | . RETAINER, SHIFTER SH..... UOC: 620, 627, 633 | 1 |
| 23 | PAFZZ | 5360-00-692-6128 | 19207 | 8331558 | . SPRING, HELICAL, COMP..... UOC: 620, 627, 633 | 1 |
| 24 | PAFZZ | 3110-00-100-6158 | 96906 | MS19059-2422 | . BALL, BEARING..... UOC: 620, 627, 633 | 1 |
| 25 | PAOZZ | 9390-00-706-1278 | 19207 | 7061278 | . BELLOWS, PROTECTION..... UOC: 620, 627, 633 | 3 |
| 26 | PAOZZ | 5310-00-740-9595 | 19207 | 7409595 | . WASHER, FLAT..... UOC: 620, 627, 633 | 1 |
| 27 | PAOZZ | 5330-00-737-6534 | 19207 | 7376534 | . RETAINER, PACKING..... UOC: 620, 627, 633 | 3 |
| 28 | PAFZZ | 5330-01-143-1211 | 19207 | 7061272 | . SEAL, PLAIN ENCASED..... UOC: 620, 627, 633 | 3 |
| 29 | PAFZZ | 5330-00-234-3317 | 19207 | 8327322 | . GASKET..... UOC: 620, 627, 633 | 1 |

| (1) ITEM NO | (2) SMR CODE | (3) NSN | (4) CAGEC | (5) PART NUMBER | (6) DESCRIPTION AND USABLE ON CODE (UOC) | (7) QTY |
|-------------------|--------------------|------------------|--------------|-----------------------|---|------------|
| 30 | PAFZZ | 5340-00-354-0771 | 19207 | 5323473 | .COVER,ACCESS..... UOC: 620, 627, 633 | 1 |
| 31 | PAFZZ | 5305-00-144-1495 | 19207 | 10910354 | .SCREW,MACHINE..... UOC: 620, 627, 633 | 6 |
| 32 | PAFZZ | 5310-00-627-6128 | 96906 | MS35335-35 | .WASHER,LOCK..... UOC: 620, 627, 633 | 6 |
| 33 | PAFZZ | 3020-00-318-0908 | 19207 | 7538671 | .GEAR,SPUR..... UOC: 620, 627, 633 | 1 |
| 34 | MFFZZ | | 96906 | MS20995F41XAR | .WIRE,NONELECTRICAL MAKE FROM WIRE,P/N MS20995F41..... UOC: 620, 627, 633 | 1 |
| 35 | PAFZZ | 5306-00-404-0075 | 19207 | 8344155 | .BOLT,MACHINE..... UOC: 620, 627, 633 | 1 |
| 36 | PAFZZ | 5310-00-407-9566 | 96906 | MS35338-45 | .WASHER,LOCK..... UOC: 620, 627, 633 | 9 |
| 37 | PAFZZ | 5306-00-225-8499 | 96906 | MS90725-34 | .BOLT,MACHINE..... UOC: 620, 627, 633 | 9 |
| 38 | PAFZZ | 2520-00-706-1210 | 19207 | 7061210 | .CLUTCH,SLIDING SLEE..... UOC: 620, 627, 633 | 1 |
| 39 | PAFZZ | 5325-00-706-1280 | 19207 | 7061280 | .RING,RETAINING..... UOC: 620, 627, 633 | 2 |
| 40 | PAFZZ | 3040-00-706-1211 | 95019 | 3P136 | .SHAFT,SHOULDERED..... UOC: 620, 627, 633 | 1 |
| 41 | PAFZZ | 3110-00-144-8518 | 21450 | 700078 | .BEARING,BALL,ANNULA..... UOC: 620, 627, 633 | 1 |
| 42 | PAFZZ | 5325-01-125-6136 | 19207 | 7061277 | .RING,RETAINING..... UOC: 620, 627, 633 | 1 |
| 43 | PAFZZ | 5330-00-559-8733 | 19207 | 7061271 | .SEAL,PLAIN ENCASED..... UOC: 620, 627, 633 | 1 |
| 44 | PFOZZ | 5306-00-493-5315 | 95019 | 36P1 | .BOLT,EYE..... UOC: 620, 627, 633 | 1 |
| 45 | PAOZZ | 5310-00-918-6921 | 96906 | MS35691-20 | .NUT,PLAIN,HEXAGON..... UOC: 620, 627, 633 | 1 |
| 46 | PAOZZ | 5310-00-080-6004 | 96906 | MS27183-14 | .WASHER,FLAT..... UOC: 620, 627, 633 | 2 |
| 47 | PAFZZ | 3040-00-706-1268 | 19207 | 7061268 | .SHAFT,SHOULDERED..... UOC: 620, 627, 633 | 1 |
| 48 | XAFZZ | | 19207 | 7061194 | .HOUSING..... UOC: 620, 627, 633 | 1 |
| 49 | PAFZZ | 3110-00-100-6155 | 96906 | MS19059-2418 | .BALL,BEARING..... UOC: 620, 627, 633 | 1 |
| 50 | PAFZZ | 5360-00-521-4784 | 19207 | 5214784 | .SPRING,HELICAL,COMP..... UOC: 620, 627, 633 | 1 |
| 51 | PAFZZ | 5365-00-769-6481 | 19207 | 7696481 | .PLUG,MACHINE THREAD..... UOC: 620, 627, 633 | 1 |
| 52 | PAFZZ | 5330-00-706-1270 | 19207 | 7061270 | .GASKET..... UOC: 620, 627, 633 | 1 |
| 53 | PAFZZ | 5325-00-706-1276 | 19207 | 7061276 | .RING,RETAINING..... UOC: 620, 627, 633 | 1 |
| 54 | PAFZZ | 2520-00-706-1274 | 19207 | 7061274 | .SHIFTER FORK,VEHICU..... UOC: 620, 627, 633 | 1 |
| 55 | PAFZZ | 5305-00-752-1058 | 19207 | 7521058 | .SETSCREW..... UOC: 620, 627, 633 | 1 |
| 56 | PAFZZ | 4730-00-626-2467 | 56442 | 2394T2 | .FLANGE,PIPE..... UOC: 620, 627, 633 | 1 |
| 57 | PAFZZ | 5305-00-269-3234 | 80204 | B1821BH038F075N | .SCREW,CAP,HEXAGON H..... UOC: 620, 627, 633 | 1 |
| 58 | PAFZZ | 3040-00-740-9592 | 19207 | 7409592 | .SHAFT,SHOULDERED..... UOC: 620, 627, 633 | 1 |
| 59 | XDFZZ | | 19207 | 7061273 | .SHIFTER FORK,NONVEH..... UOC: 620, 627, 633 | 1 |
| 60 | PAFZZ | 2520-00-740-9593 | 19207 | 7409593 | .SHAFT OUTPUT..... UOC: 620, 627, 633 | 1 |

UNIT, DIRECT SUPPORT, AND GENERAL SUPPORT MAINTENANCE
REPAIR PARTS AND SPECIAL TOOLS LIST
TRUCK, 5-TON, 6X6, M809 SERIES TRUCKS (DIESEL)

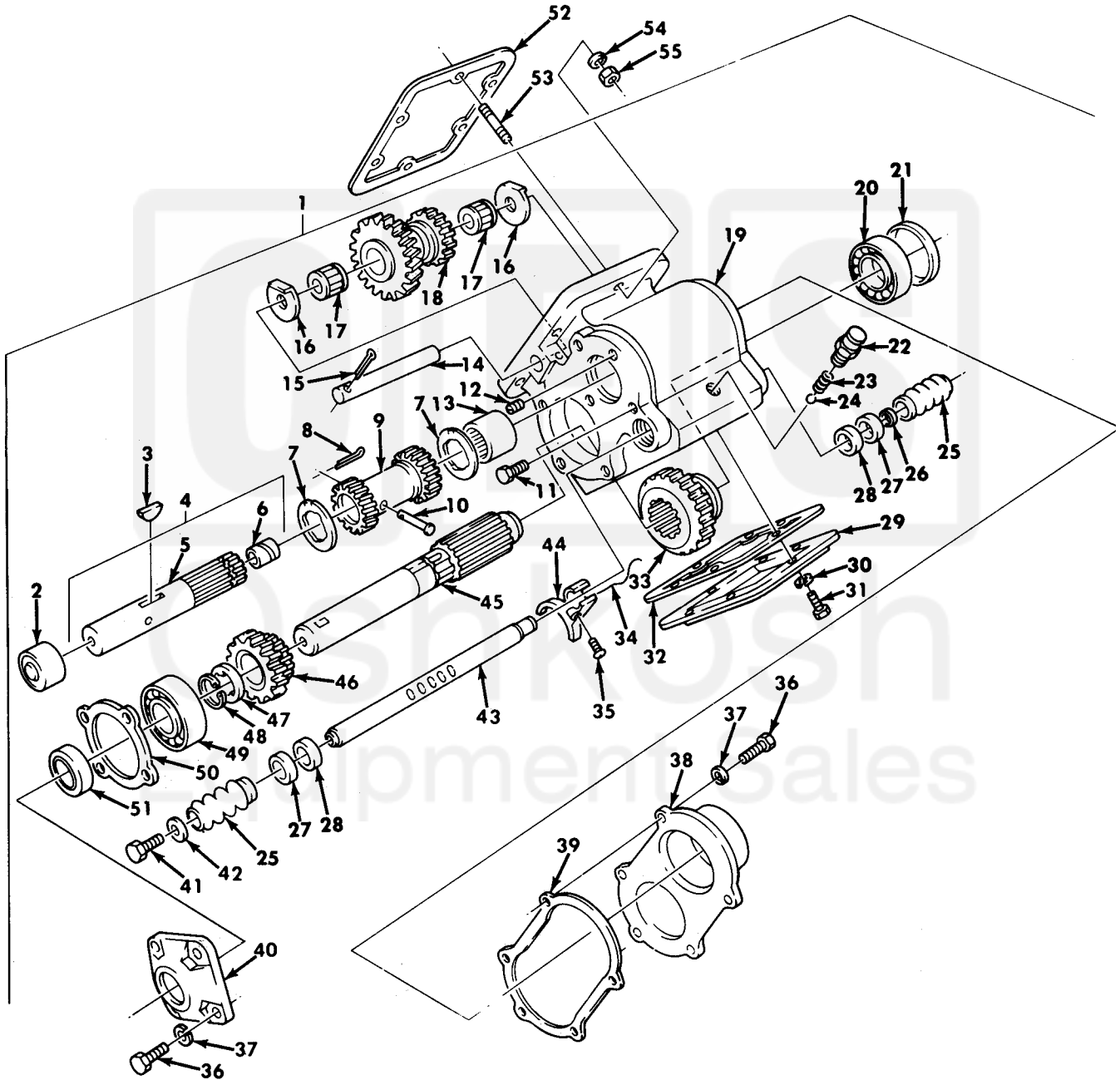


Figure 419. Transmission Power Takeoff Assembly and Mounting Hardware.

| (1) ITEM NO | (2) SMR CODE | (3) NSN | (4) CAGEC | (5) PART NUMBER | (6) DESCRIPTION AND USABLE ON CODE (UOC) | (7) QTY |
|--|--------------------|------------------|--------------|-----------------------|---|------------|
| GROUP 2004 POWER TAKEOFF ASSEMBLY | | | | | | |
| FIG. 419 TRANSMISSION POWER TAKEOFF ASSEMBLY AND MOUNTING HARDWARE | | | | | | |
| 1 | PGFFH | 2520-00-740-9588 | 19207 | 7409588 | POWER TAKEOFF, TRANS. UOC: 614, 621, 622, 623, 625, 628, 634, 637 | 1 |
| 2 | PAFZZ | 3110-00-183-6723 | 96906 | MS17131-35 | . BEARING, ROLLER, NEED. UOC: 614, 621, 622, 623, 625, 628, 634, 637 | 1 |
| 3 | PAFZZ | 5315-00-058-8581 | 96906 | MS35756-109 | . KEY, WOODRUFF. UOC: 614, 621, 622, 623, 625, 628, 634, 637 | 1 |
| 4 | PAFZZ | 2520-00-740-9594 | 19207 | 7409594 | . SHAFT REVERSE GEAR. UOC: 614, 621, 622, 623, 625, 628, 634, 637 | 1 |
| 5 | XAFZZ | | 19207 | 10900574 | . . SHAFT. UOC: 614, 621, 622, 623, 625, 628, 634, 637 | 1 |
| 6 | PAFZZ | 3120-00-737-3115 | 19207 | 7373115 | . . BEARING, SLEEVE. UOC: 614, 621, 622, 623, 625, 628, 634, 637 | 1 |
| 7 | PAFZZ | 5310-00-706-1281 | 19207 | 7061281 | . WASHER, THRUST. UOC: 614, 621, 622, 623, 625, 628, 634, 637 | 2 |
| 8 | PAFZZ | 5315-00-839-2326 | 96906 | MS24665-281 | . PIN, COTTER. UOC: 614, 621, 622, 623, 625, 628, 634, 637 | 1 |
| 9 | PAFZZ | 2520-00-740-9587 | 19207 | 7409587 | . GEAR REVERSE SHAFT. UOC: 614, 621, 622, 623, 625, 628, 634, 637 | 1 |
| 10 | PAFZZ | 5315-01-208-5492 | 19207 | 8728251 | . PIN, STRAIGHT, HEADED. UOC: 614, 621, 622, 623, 625, 628, 634, 637 | 1 |
| 11 | PAFZZ | 5306-00-226-4822 | 80204 | B1821BH031C050N | . BOLT, MACHINE. UOC: 614, 621, 622, 623, 625, 628, 634, 637 | 2 |
| 12 | PAFZZ | 4730-00-018-9566 | 81348 | WW-P-471ACABCA | . PLUG, PIPE. UOC: 614, 621, 622, 623, 625, 628, 634, 637 | 1 |
| 13 | PAFZZ | 3110-00-183-6723 | 96906 | MS17131-35 | . BEARING, ROLLER, NEED. UOC: 614, 621, 622, 623, 625, 628, 634, 637 | 1 |
| 14 | PAFZZ | 3040-00-706-1266 | 95019 | 9P21 | . SHAFT, SHOULDERED. UOC: 614, 621, 622, 623, 625, 628, 634, 637 | 1 |
| 15 | PAFZZ | 5315-00-013-7258 | 96906 | MS24665-497 | . PIN, COTTER. UOC: 614, 621, 622, 623, 625, 628, 634, 637 | 1 |
| 16 | PAFZZ | 5310-00-753-8656 | 19207 | 7538656 | . WASHER, KEY. UOC: 614, 621, 622, 623, 625, 628, 634, 637 | 2 |
| 17 | PAFZZ | 3110-00-227-3074 | 19207 | 7538658 | . BEARING, ROLLER, JOUR. UOC: 614, 621, 622, 623, 625, 628, 634, 637 | 2 |
| 18 | PAFZZ | 3020-00-740-9586 | 19207 | 7409586 | . GEAR CLUSTER. UOC: 614, 621, 622, 623, 625, 628, 634, 637 | 1 |
| 19 | PAFZZ | 2520-00-706-1160 | 19207 | 7061160 | . CASE NAME PLATE. UOC: 614, 621, 622, 623, 625, 628, 634, 637 | 1 |
| 20 | PAFZZ | 3110-00-100-3119 | 60038 | 7000-80 | . CONE AND ROLLERS, TA. UOC: 614, 621, 622, 623, 625, 628, 634, 637 | 1 |
| 21 | PAFZZ | 2520-00-706-1265 | 19207 | 7061265 | . SPACER POWER TAKE O. UOC: 614, 621, 622, 623, 625, 628, 634, 637 | 1 |
| 22 | PAFZZ | 2520-00-104-4603 | 19207 | 5226140 | . RETAINER, SHIFTER SH. UOC: 614, 621, 622, 623, 625, 628, 634, 637 | 1 |
| 23 | PAFZZ | 5360-00-692-6128 | 19207 | 8331558 | . SPRING, HELICAL, COMP. UOC: 614, 621, 622, 623, 625, 628, 634, 637 | 1 |
| 24 | PAFZZ | 3110-00-100-6158 | 96906 | MS19059-2422 | . BALL, BEARING. UOC: 614, 621, 622, 623, 625, 628, 634, 637 | 1 |
| 25 | PAFZZ | 9390-00-706-1278 | 19207 | 7061278 | . BELLOWS, PROTECTION. UOC: 614, 621, 622, 623, 625, 628, 634, 637 | 2 |
| 26 | PAFZZ | 5310-00-740-9595 | 19207 | 7409595 | . WASHER, FLAT. UOC: 614, 621, 622, 623, 625, 628, 634, 637 | 1 |
| 27 | PAFZZ | 5330-00-737-6534 | 19207 | 7376534 | . RETAINER, PACKING. UOC: 614, 621, 622, 623, 625, 628, 634, 637 | 2 |
| 28 | PAFZZ | 5330-01-143-1211 | 19207 | 7061272 | . SEAL, PLAIN ENCASED. UOC: 614, 621, 622, 623, 625, 628, 634, 637 | 2 |
| 29 | PAFZZ | 5340-00-354-0771 | 19207 | 5323473 | . COVER, ACCESS. UOC: 614, 621, 622, 623, 625, 628, 634, 637 | 1 |

| (1) ITEM NO | (2) SMR CODE | (3) NSN | (4) CAGEC | (5) PART NUMBER | (6) DESCRIPTION AND USABLE ON CODE (UOC) | (7) QTY |
|-------------------|--------------------|------------------|--------------|-----------------------|---|------------|
| 30 | PAFZZ | 5310-00-627-6128 | 96906 | MS35335-35 | . WASHER, LOCK. UOC: 614, 621, 622, 623, 625, 628, 634, 637 | 6 |
| 31 | PAFZZ | 5305-00-144-1495 | 19207 | 10910354 | . SCREW, MACHINE. UOC: 614, 621, 622, 623, 625, 628, 634, 637 | 6 |
| 32 | PAFZZ | 5330-00-234-3317 | 19207 | 8327322 | . GASKET. UOC: 614, 621, 622, 623, 625, 628, 634, 637 | 1 |
| 33 | PAFZZ | 3020-00-318-0908 | 19207 | 7538671 | . GEAR, SPUR. UOC: 614, 621, 622, 623, 625, 628, 634, 637 | 1 |
| 34 | MFFZZ | | 96906 | MS20995F41XAR | . WIRE, NONELECTRICAL MAKE FROM WIRE, P/N MS20995F41. UOC: 614, 621, 622, 623, 625, 628, 634, 637 | 1 |
| 35 | PAFZZ | 5306-00-404-0075 | 19207 | 8344155 | . BOLT, MACHINE. UOC: 614, 621, 622, 623, 625, 628, 634, 637 | 1 |
| 36 | PAFZZ | 5306-00-225-8499 | 96906 | MS90725-34 | . BOLT, MACHINE. UOC: 614, 621, 622, 623, 625, 628, 634, 637 | 9 |
| 37 | PAFZZ | 5310-00-407-9566 | 96906 | MS35338-45 | . WASHER, LOCK. UOC: 614, 621, 622, 623, 625, 628, 634, 637 | 9 |
| 38 | PAFZZ | 2520-00-706-1269 | 19207 | 7061269 | . CAP, END, POWER TAKEO. UOC: 614, 621, 622, 623, 625, 628, 634, 637 | 1 |
| 39 | PAFZZ | 5330-00-706-1270 | 19207 | 7061270 | . GASKET. UOC: 614, 621, 622, 623, 625, 628, 634, 637 | 1 |
| 40 | PAFZZ | 4730-00-626-2467 | 56442 | 2394T2 | . FLANGE, PIPE. UOC: 614, 621, 622, 623, 625, 628, 634, 637 | 1 |
| 41 | PAFZZ | 5305-00-269-3234 | 80204 | B1821BH038F075N | . SCREW, CAP, HEXAGON H. UOC: 614, 621, 622, 623, 625, 628, 634, 637 | 1 |
| 42 | PAFZZ | 5310-00-080-6004 | 96906 | MS27183-14 | . WASHER, FLAT. UOC: 614, 621, 622, 623, 625, 628, 634, 637 | 1 |
| 43 | PAFZZ | 3040-00-740-9592 | 19207 | 7409592 | . SHAFT, SHOULDERED. UOC: 614, 621, 622, 623, 625, 628, 634, 637 | 1 |
| 44 | XDFZZ | | 19207 | 7061273 | . SHIFTER FORK, NONVEH. UOC: 614, 621, 622, 623, 625, 628, 634, 637 | 1 |
| 45 | PAFZZ | 2520-00-740-9593 | 19207 | 7409593 | . SHAFT OUTPUT. UOC: 614, 621, 622, 623, 625, 628, 634, 637 | 1 |
| 46 | PAFZZ | 3020-00-740-9585 | 19207 | 7409585 | . GEAR CLUSTER. UOC: 614, 621, 622, 623, 625, 628, 634, 637 | 1 |
| 47 | PAFZZ | 3120-00-753-8661 | 19207 | 7538661 | . BEARING, WASHER, THRU. UOC: 614, 621, 622, 623, 625, 628, 634, 637 | 1 |
| 48 | PAFZZ | 5325-01-163-5018 | 19207 | 7538660 | . RING, RETAINING. UOC: 614, 621, 622, 623, 625, 628, 634, 637 | 1 |
| 49 | PAFZZ | 3110-00-555-7227 | 21450 | 714248 | . BEARING, BALL, ANNULA. UOC: 614, 621, 622, 623, 625, 628, 634, 637 | 1 |
| 50 | PAFZZ | 5330-00-532-3606 | 19207 | 5323606 | . GASKET. UOC: 614, 621, 622, 623, 625, 628, 634, 637 | 1 |
| 51 | PAFZZ | 5330-00-404-3210 | 19207 | 11640317 | . SEAL, PLAIN ENCASED. UOC: 614, 621, 622, 623, 625, 628, 634, 637 | 1 |
| 52 | PAFZZ | 5330-00-234-3317 | 19207 | 8327322 | . GASKET. UOC: 614, 621, 622, 623, 625, 628, 634, 637 | 1 |
| 53 | PAFZZ | 5307-00-011-3247 | 24617 | 113247 | . STUD, PLAIN. UOC: 614, 621, 622, 623, 625, 628, 634, 637 | 6 |
| 54 | PAFZZ | 5310-00-637-9541 | 96906 | MS35338-46 | . WASHER, LOCK. UOC: 614, 621, 622, 623, 625, 628, 634, 637 | 6 |
| 55 | PAFZZ | 5310-00-732-0559 | 96906 | MS51968-8 | . NUT, PLAIN, HEXAGON. UOC: 614, 621, 622, 623, 625, 628, 634, 637 | 6 |

END OF FIGURE